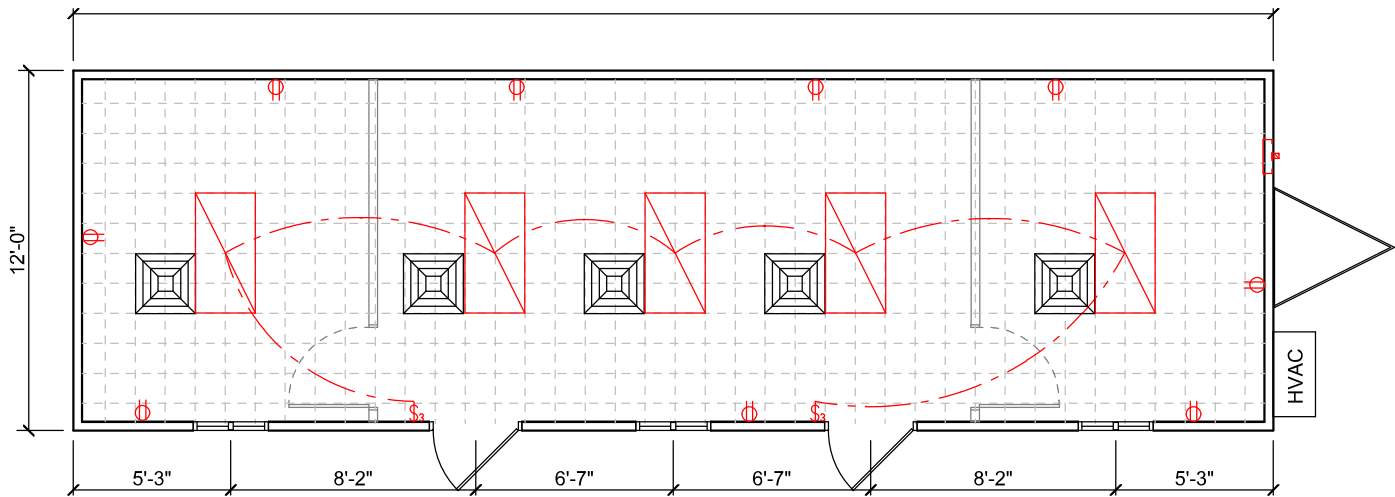


# 12x40 Up-Graded Site Trailer



## STANDARD FEATURES

## EXTERIOR DIMENSIONS

12' wide 40' long plus 48" hitch. 95" ceiling height.

## INTERIOR FINISHES

**Flooring:** Vinyl composite tile.

**Walls:** Wood grain finished wood paneling / Vinyl finished wood paneling

**Ceiling:** Suspended metal grid with 2x4 tile

## EXTERIOR DOORS

**34" x 80" metal clad solid slabs in aluminum frame**

**complete with check chain and lock set.**

## WINDOWS

**32" X 40" double pane aluminum windows with lock and insect screen**

## ELECTRICAL

**Electrical Service: 120/240 single phase.**

**Service Entrance:** Rigid nipple to exterior.

**Service Panel: 32 circuit 1 phase 3 wire 240 V AC, main breaker to suit design load**

**Outlets: (8) duplex receptacles**

**Light Switches:** (1) single pole


Lighting: (5) recessed 2'x4' four tube fluorescent with acrylic lens.

HVAC: Central electric heat and air conditioning, with supply duct in the ceiling

cavity. Through the wall and undercut doors for return air supply.

## SITE EQUIPMENT

(2) Knock down steel framed entry system with pressure treated wood treads and landing per door. Galvanized steel leveling stands to suit trailer size.

 = 1 sqft

Optional partitioning and door locations in light grey

Note: Floor plans are not to scale,  
and may not be exactly as shown.

# TURKSTRA TRAILERS

**1-800-265-9999**